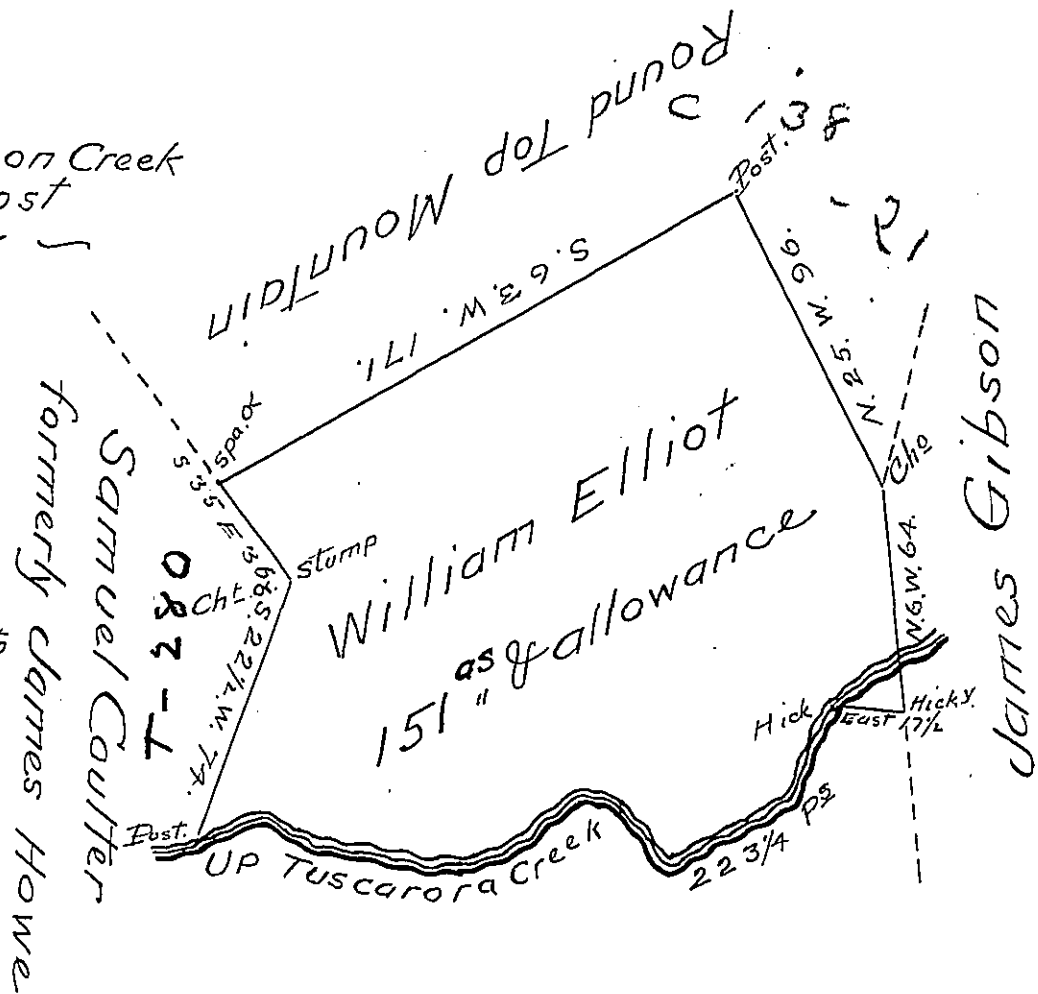


Courses & Distances on Creek
Beginning at a post
thence up Creek -

N. 80 1/2 E.	19.
S. 55 1/2 E.	11.
S. 80 1/2 E.	4 6/12.
N. 81 1/2 E.	11.
N. 45 E.	24.
S. 76 E.	26
S. 20 E.	15 1/4
N 68 E.	36 1/2
N 45 E.	34 ps/6
The HickY.	22 3/4



Draught of a Tract of Situate on the Head
Branches of Tuscarora Creek in Fannet Township
Franklin County (formerly Cumberland County)
Containing one hundred and fifty one Acres
& allowance of six $\text{R} \text{ } \text{Ct}$ for Roads - Surveyed
the 10th day of November 1784 by the late -
Matt^w. Henderson Esq^r D.S. in pursuance of
a warrant granted William Elliot for 100^{ac}
Dated the 17th day of June 1763. Examined
for Return from an Original Draft of said Matt^w.
Henderson Esq^r D.S. as filed in the Deputy Surveyors
of Franklin County - November 28th 1816
Rich^d T. Leech Esq^r } Arch^d. Fleming D.S.
Surveyor General }

IN TESTIMONY that the above is a copy of the original remaining on file in
the Department of Internal Affairs of Pennsylvania, made
conformably to an Act of Assembly approved the 16th day of
February, 1833, I have hereunto set my Hand and caused
the Seal of said Department to be affixed at Harrisburg,
this nineteenth day of September 1904.

Joseph B. Brown
Secretary of Internal Affairs.